

Duo MFA – multifactor authentication with fingerprint

It is possible to use fingerprint authentication with Duo MFA by using FIDO2-compatible security-key or computer fingerprint sensor.

Compatible FIDO2-keys to use with Duo MFA are FEITIAN and UBIKEY security keys.

See <https://guide.duo.com/passwordless#security-keys>

How do I activate fingerprint authentication in Duo MFA?

Follow the instruction below to activate fingerprint authentication.

After you get DUO MFA authentication request, choose Other options



Check for a Duo Push

Verify it's you by approving the notification...

Sent to "SyncFromPeppi" (+*** ** **5016)



[Other options](#)


Choose Other options


[Need help?](#)


Secured by Duo


[< Back](#)


Other options to log in

 **Duo Push**
Send to "SyncFromPeppi" (+... ..5016) >

 **Duo Mobile passcode**
Enter a code from the Duo Mobile app >

 **Text message passcode**
Send to "SyncFromPeppi" (+... ..5016) >


 **Bypass code**
Enter a code from your IT help desk >

 **Manage devices**
Add a phone, Touch ID, and more. >
1 First you'll verify your identity.


[Need help?](#) Secured by Duo


Choose Manage Devices


[< Back](#)




Verify your identity before managing devices

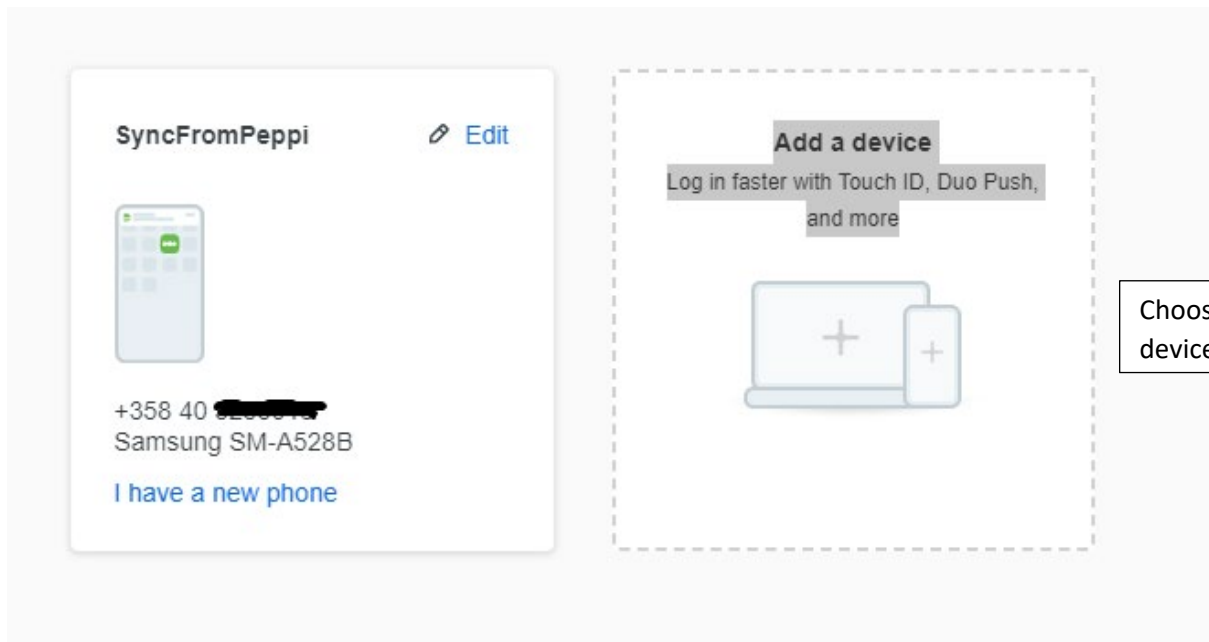
 **Duo Push**
Send to "SyncFromPeppi" (+... ..5016) >

 **Duo Mobile passcode**
Enter a code from the Duo Mobile app >

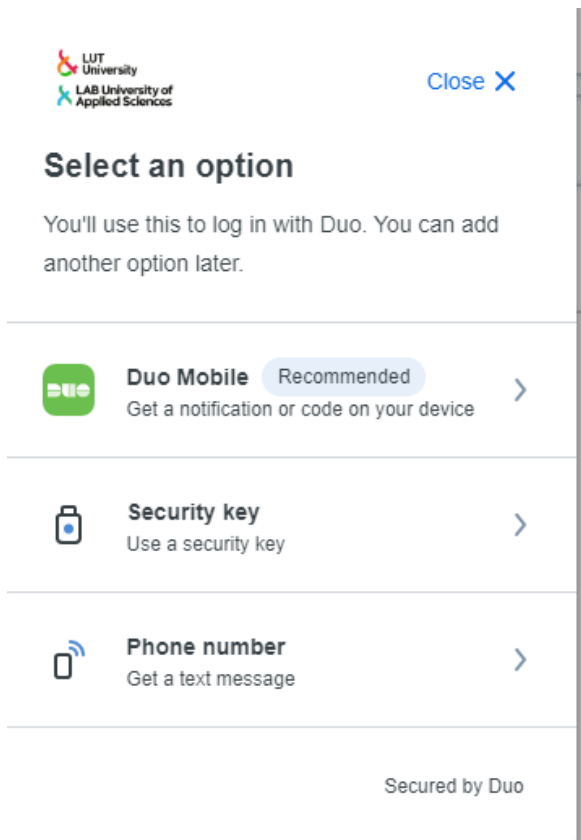
 **Text message passcode**
Send to "SyncFromPeppi" (+... ..5016) >

 **Bypass code**
Enter a code from your IT help desk >

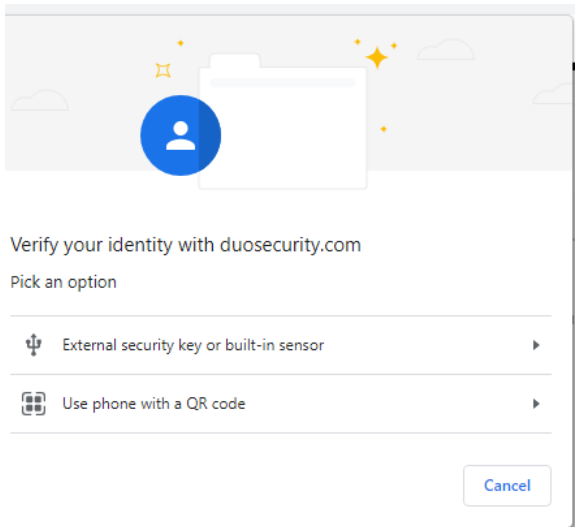
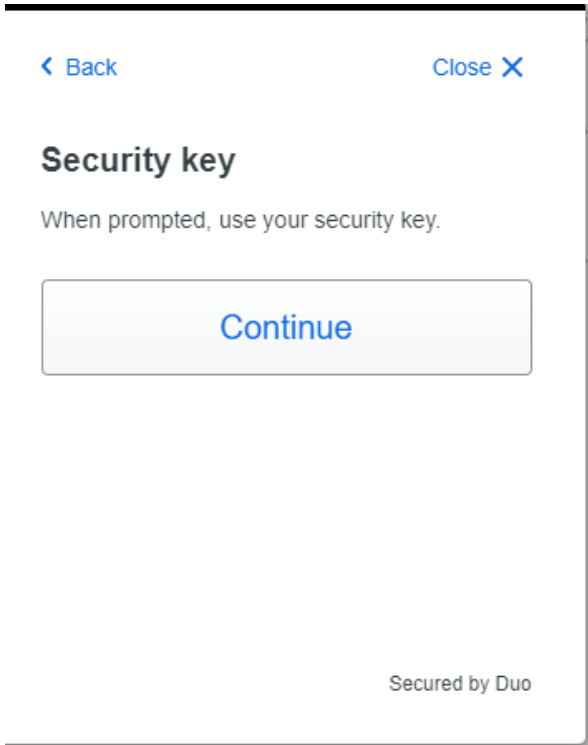
Verify yourself, before security key addition.



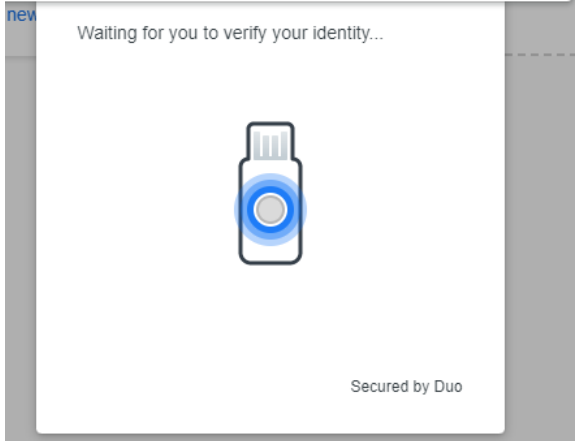
In the picture above, user has already activated mobile phone for Duo Mobile. Now security key is added as new authentication device. It could also be, that there is now authentication device activated. In that case, the security key is added as only authentication device.



Add Security key



Choose External security key or built-in sensor





Windowsin suojaus



Suojausavaimen määrittäminen

Määritä suojausavain, jolla voit kirjautua kohteeseen duosecurity.com käyttäjänä duostudent438.

Tämän pyynnön on esittänyt Chrome ja julkaissut Google LLC.

OK

Peruuta

There reads:
Specify security key to use
for authentication.



Windows Security



Making sure it's you

Please sign in to duosecurity.com.

This request comes from Chrome, published by Google LLC.



Insert your security key into the USB port.

Cancel

Insert security key into the USB
port or use computers fingerprint
sensor.



Windows Security



Making sure it's you

Please sign in to duosecurity.com.

This request comes from Chrome, published by Google LLC.



Touch your security key.

Cancel

✓ Added security key

You can now log in with Duo using this security key.

Continue

Secured by Duo

Security key

 Edit



Security key

Edit => You may name your security key.